

# GEN4



MIDWEST  
MACHINERY CO



## CREATING RUN PAGE SETS

How to create a Run Page Set on a Gen4 display as well as how to change the active set.

# Gen4 - Creating Run Page Sets

How to create a Run Page Set on a Gen4 display as well as how to change the active set. These can be created for each part of the growing season.

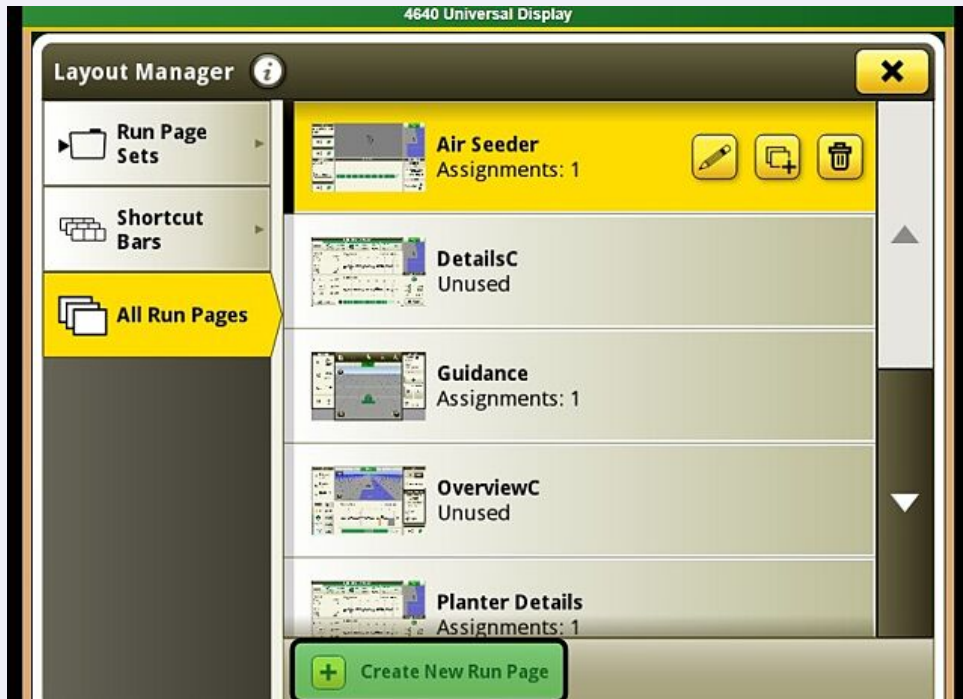
- 1 Go into the Layout Manager





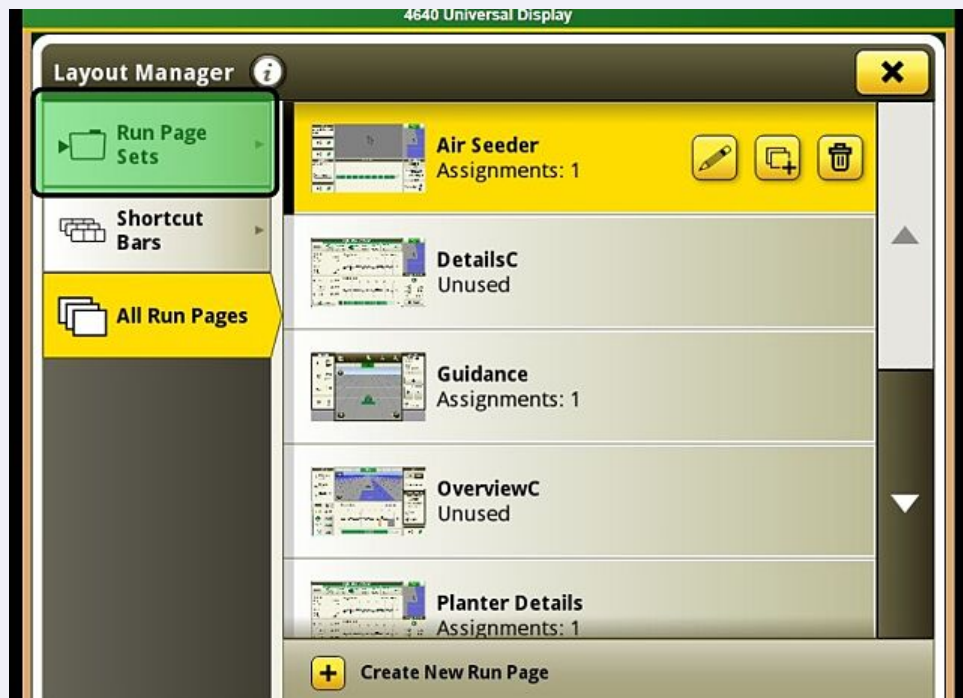
2

Create ALL run pages that Operator would like to include in the set in the "All Run Pages" section

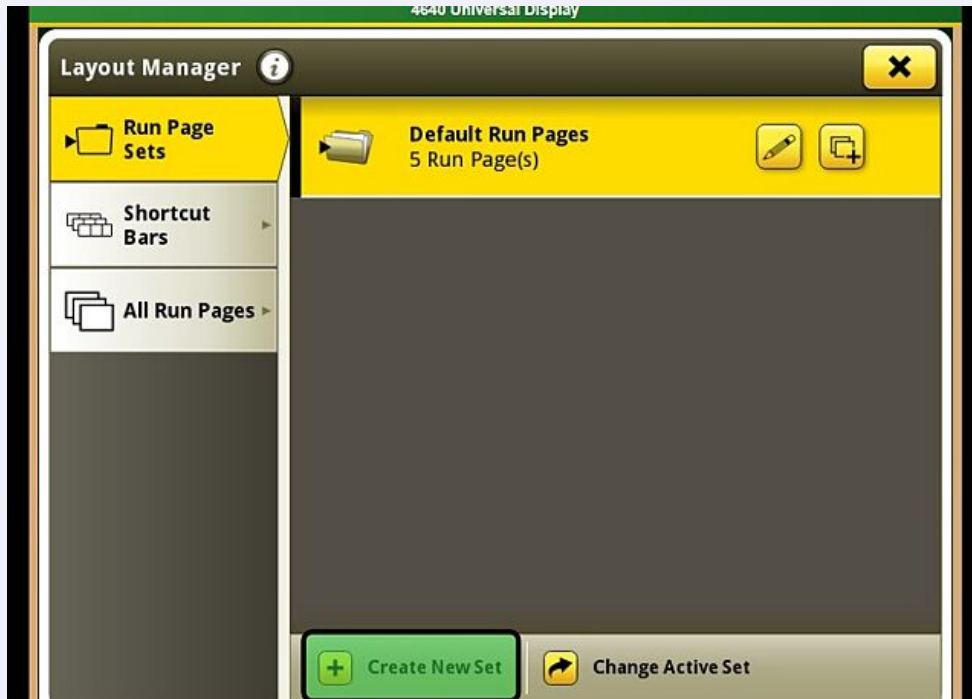


3

Once all run pages have been created, go back to the "Run Page Sets" section



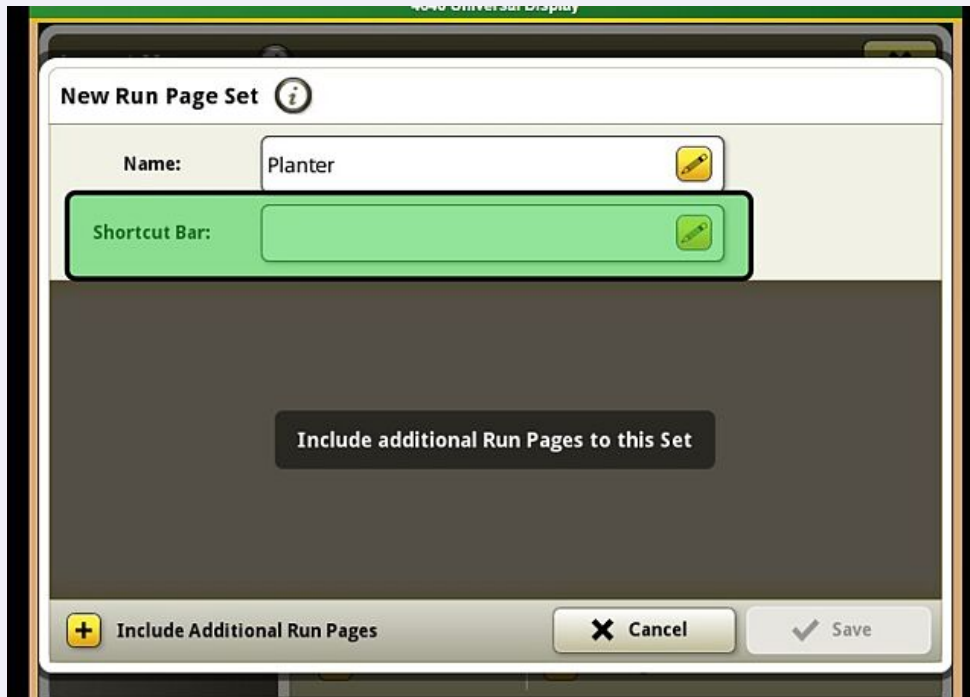
- 4 Select "Create New Set" at the bottom of the screen



- 5 Name the Run Page Set



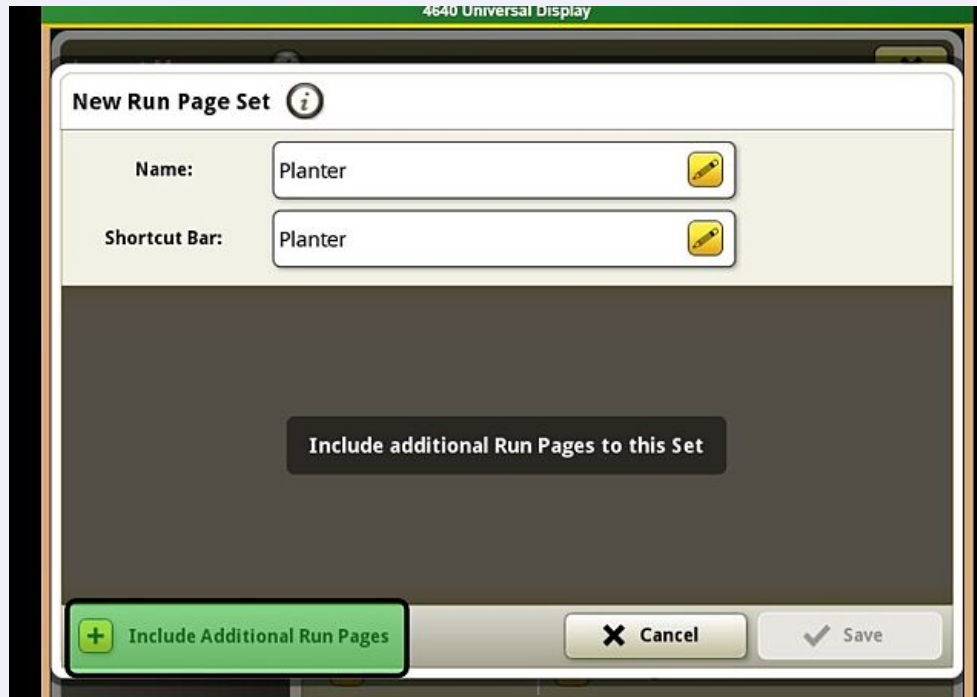
6 Select a Shortcut Bar to go with the Run Page Set.



! Shortcut bars can be copied and customized as desired. Ex. For a planting run page set, Operator may add planter functions like the SeedStar app and the section control master to the shortcut bar.

7

Select "Include Additional Run Pages" and add all the run pages Operator previously created and would like to include for the selected set



Example of Step 7: For a SeedStar4 planter, Operator would likely add the Planter Details page, a Planter Summary page, and a Guidance page

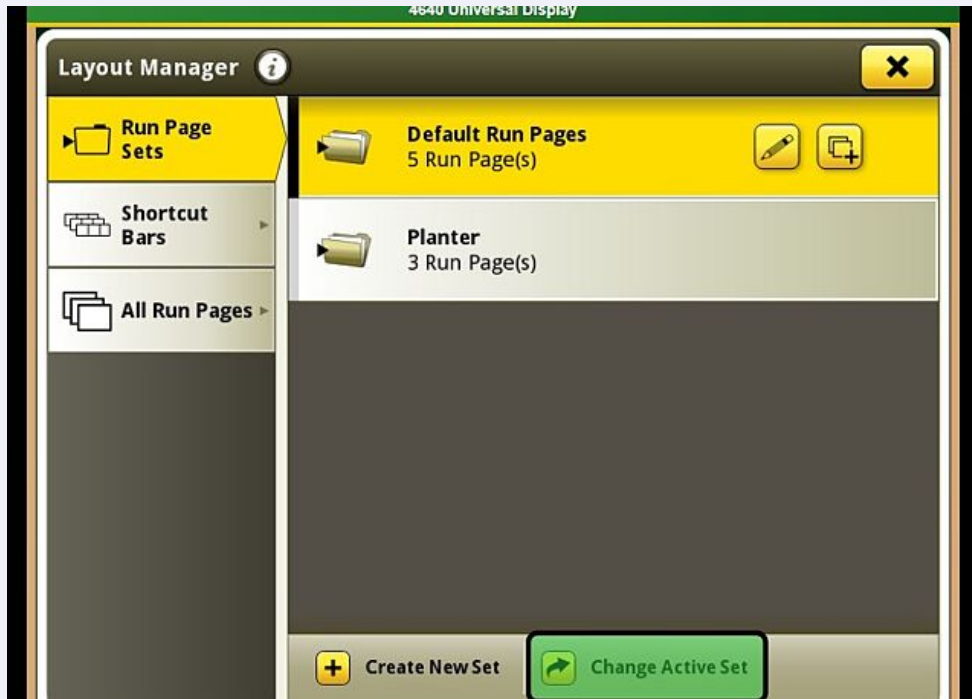
8

Once all run pages have been added to the set, select "Save." Once saved, the set is created

## Changing Active Set

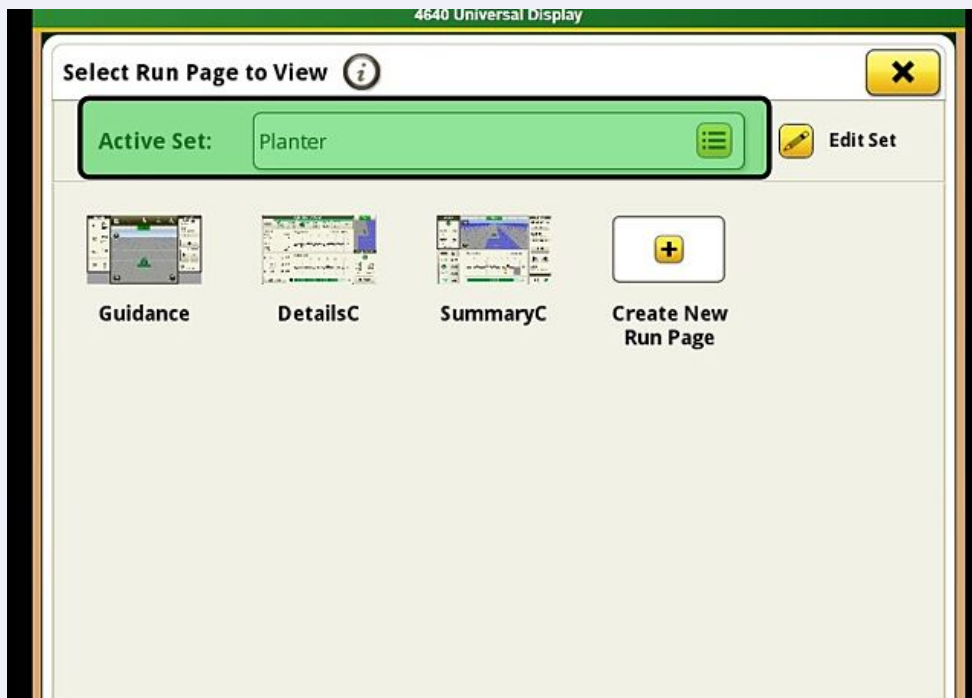
9

To Change the Active Set, select "Change Active Set" under the Run Page Sets section

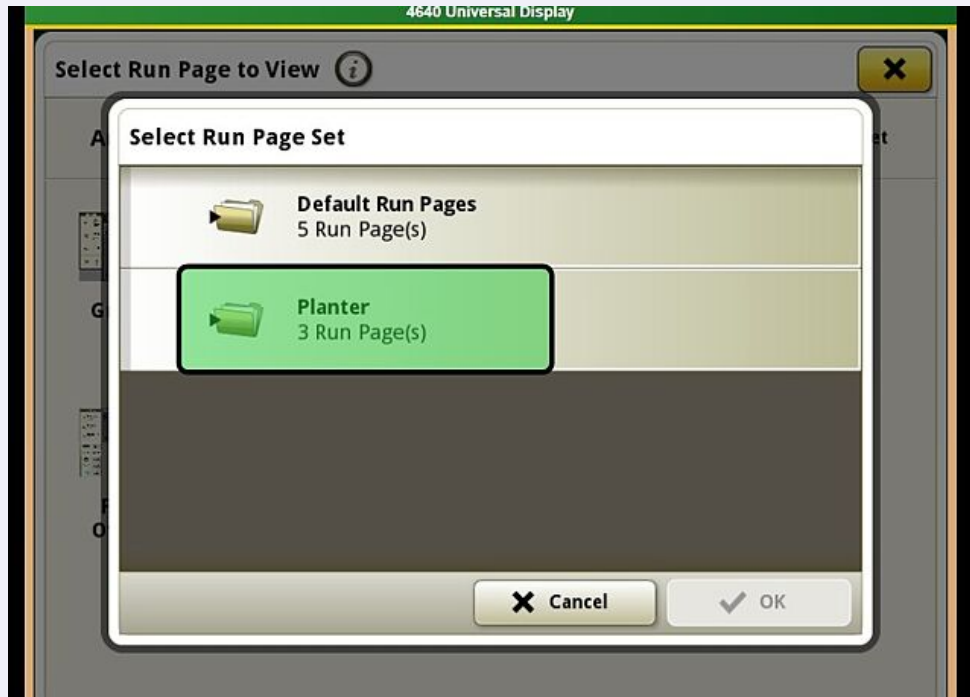


10

Select the white bar next to "Active Set:"



11 Select the Run Page set Operator would like to enable



12 Select "Ok"





**13**

After selecting Ok, the selected run page set has been enabled. Operator may exit out of the Main Menu and back to the run pages.